

The sleek and minimal kitchen looks out over the decorative table that's dressed to impress dinner guests.



# matters of the heart

Feature by **Amelia Thorpe**  
Photography by **Darren Chung**

With views of the famous Queen Elizabeth Reservoirs and a luxurious interior, this spacious penthouse offers chic, modern living at its best.



**above & below** Ideal for meal preparation, the island has a durable granite worktop plus a ledge at one side for bar stools. Opaque glass-fronted wall cabinets are framed in aluminium to add interest and variety to the handle-less design.



**right** Wide glass doors lead from the dining and living area on to the roof terrace with its fine views.

**below** Walnut flooring and neutral walls provide a simple backdrop to the glossy furnishings.



It's all rather unexpected, but pleasingly so. Enter the double-height lobby at The Heart, which is a chic and stunning new residential development in Walton-on-Thames, and you can be forgiven for thinking that you've just arrived at a luxury hotel of the highest quality. Ahead of you is a wall of sparkling, scarlet glass and escalators which take you to a central garden that's eight metres in the air. Explains Alison Allen, Director at developer O&H Properties, "We've planned it as a surprise. The garden is spread over 1¼ acres and is planted with trees, shrubs and flowers."

The garden is indicative of the approach taken by Alison and her team when constructing the residential element of the award-winning £150m build. Situated above a lively retail development, it features six floors of breathtaking apartments.

The impressive top storey comprises 14 luxury penthouses boasting plenty of impact and contemporary quality. "They are spacious, light and full of sumptuous textures and materials," says Alison. Stand on the roof terrace of the show penthouse and you can enjoy superb views of the garden, or take in the distant skyline of London.

### design profile

Take a visit to suburban Surrey to discover a deluxe property that's designed with entertaining in mind. An inviting open-plan living and dining area comprising a streamlined and wonderfully-glossy Poggenpohl Segmento kitchen is finished with seductive furnishings and fabrics for a contemporary yet comfortable result. Head to the master suite and you'll find this season's key colours of golds, blacks and purples on a plethora of rich textures while the bathrooms are deliberately kept neutrally chic.

**The Heart, New Zealand Avenue, Walton-on-Thames Surrey KT12 1GH.**  
**Tel: 01932 243804. [www.theheartofwalton.com](http://www.theheartofwalton.com)**  
 Expect to pay from £657,000.



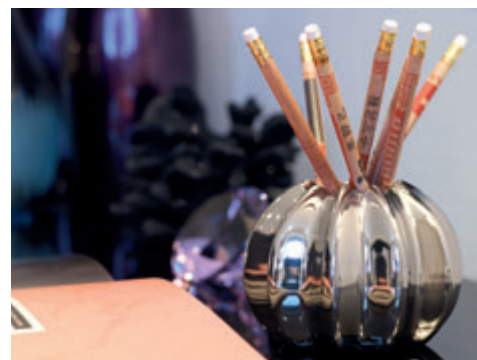
**above** Masculine yet glamorous, the dressing table is ideal for make-up application or penning letters.

**below** Showcasing attention to detail throughout, sumptuous textures were also used for cushions.



**above right** For a dramatic look, the padded wall behind the master bed is covered in purple velvet.

**below** Eclectic accessories were chosen to look as though they have been collected over years.



An open-plan living, dining and cooking area is a desirable feature of the three bedroom penthouse. "We felt that was the best way to go because it offers a lovely, sociable space," says Alison, who selected designer Robert Lawrie, Marketing & Dealership Manager at Poggenpohl, to create the sleek and streamlined kitchen. "We kept the layout very simple and made use of clean-lined, geometric shapes. The idea was to achieve an architectural yet lasting look, in keeping with the rest of the development," says Robert. Stone and gloss finishes were chosen to complement the wood flooring and lighting that's designed to help create a variety of moods. "In the evening, perhaps, you might elect to light up only the perimeter of the room, which will give a more relaxed feeling to the place," adds Robert.

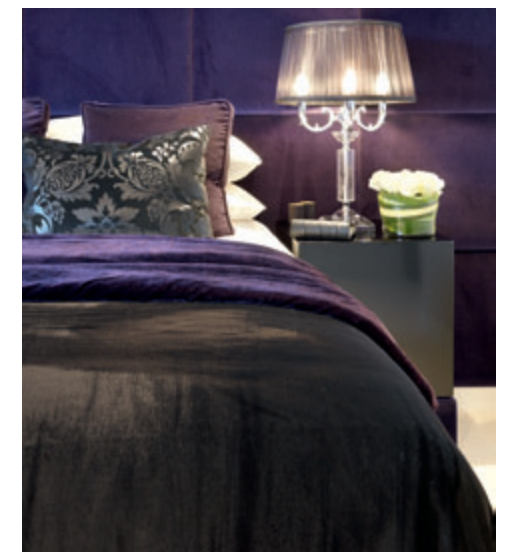
Whilst the kitchen is all about understated cool, the décor throughout the rest of the apartment is about turning up the temperature. Carefully created by Derek Taylor, Managing Director at interior design company Ishoka (and popular TV presenter to boot), the interior is eclectic and memorable. "His designs are generally very up-to-date and he always creates a stylish look with plenty of dramatic colour," says Alison.

Fresh from co-presenting the ITV1 show '60 Minute Makeover', Derek is inspired by fashions. "Whatever styles are on the catwalk will trickle down to the world of interior design in six to 12 months' time," he says. "I've used metallic, glass and colour, because they're so 'in' right now, and I wanted the feel of it to be as if we could be in the centre of New York, London or Paris," he adds.

Cast your eyes around the living room to the sofa covered in a rich and regal purple fabric, the Louis XVI-style chair upholstered with dramatic stripes, the wood veneer wallpaper and glossy lacquered furniture, and you'll see exactly what he means. "These days there are no fixed rules. You can mix as many styles together as you feel you want to and it will never look wrong," he explains.

Derek has taken much the same approach in the master bedroom with its padded velvet wall, bespoke bed and decorative furniture. "I really like things to look eclectic – as if they've been collected over the years. I'm not keen on show homes where everything matches as if someone has just gone along ticking the boxes from a catalogue," he says.

Simple, neutral-hue bathrooms complete the scene that could be yours for a cool £657,000. ■





**left** Both glass and mirrored panels enhance the feeling of space in the neutrally toned bathroom.

**above** A spacious corner enclosure fits snugly into the en suite that is clad in creamy porcelain tiles.

## useful information

### Interior design

Ishoka. **Tel: 01372 747766. www.ishoka-uk.co.uk**

### Kitchen

Segmento GB640 Blossom White gloss laminate **cabinetry**, from around £20,000, at Poggenpohl. **Tel: 0800 068 3606. www.poggenpohl.co.uk**

### Appliances

S5555 **dishwasher**, around £550; T5483X0 **hob**, around £680; similar D91T7 **extractor hood**, £1195; K9524 **fridge freezer**, around £756; H5972 combination **microwave**, from around £594; B1322 single **oven**, around £344, at Neff. **Tel: 0870 513 3090. www.neff.co.uk**

### Fixtures & furnishings

Similar under-mounted **sink**, BlancoTipo 45S, £141; BlancoEye 5300 **tap**, £166, at Blanco. **Tel: 020 8452 3399. www.blanco.co.uk**

Nero Impala granite **worktops** and **splashback**, priced to order, at Poggenpohl. **Details as before.**

Similar slate **floor tiles**, Pearl Grey Naturale, from around £52 per sq. m., at European Heritage. **Tel: 020 7381 6063. www.europeanheritage.com**

Walnut 3 strip engineered **wood flooring**, around £38 per sq. m., at Countrywide Carpets & Flooring. **Tel: 01932 220334. www.countrycarpets.plus.com**

Provencal **dining table**, £730, at Ecco Trading. **Tel: 020 7498 5005. www.eccotrading.com**

Carlucci New Premium **sofa** and **chair upholstery**, £46 per m., at Jab. **Tel: 020 7349 9323. www.jab.de**

Bespoke **coffee table**, priced to order, at Curve & Co. **Tel: 01438 815551. www.curveandco.co.uk**

Friday **curtain fabric**, £119 per m., at Andrew Martin. **Tel: 020 7225 5100. www.andrewmartin.co.uk**

Hypos **wallpaper**, £51 per 10m. roll, at Brian Yates. **Tel: 020 7352 0123. www.brian-yates.co.uk**

Schumacher Natural Textures **wallcovering**, around £120 per 3.7m. roll, at Turnell & Gigon. **Tel: 020 7259 7280. www.tandggroup.com**

Similar **wall lights**, priced to order, at Heathfield. **Tel: 01732 350450. www.heathfield.co.uk**

### Master bedroom

Varese **wall fabric**, £39 per m., at Designers Guild. **Tel: 020 7351 5775. www.designersguild.com**

Ravenna **curtain fabric**, £38 per m., at Romo Fabrics. **Tel: 0845 644 4400. www.romofabrics.com**

Black **chairs**, £229 each; **mirror**, £229, at Decorexi. **Tel: 020 7354 1881. www.decorex.co.uk**

Afghan natural wool mix **carpet**, £10 per sq. m., at Countrywide Carpets & Flooring. **Details as before.**

Bespoke **bedside tables** and Bling **console table**, each priced to order, at H.B. Group. **Tel: 0121 559 9111. www.hbgroup.co.uk**

### En suite & master bathroom

EcoStat 1001 SL thermostatic **shower mixer**, around £274; Croma **hand-showers**, around £22 each; Talis S **basin mixer**, around £133; Talis S **bath mixer**, around £168, at Hansgrohe. **Tel: 0870 770 1972. www.hansgrohe.co.uk**

Similar **enclosure**, SNMP900, £892, at Showerlux. **Tel: 02476 882515. www.showerlux.com**

Pentangle **shower tray**, around £122, at Mira. **Tel: 0870 241 0888. www.mirashowers.com**

Steel enamel Saniform **bath**, £436, at Kaldewei. **Tel: 0870 777 2223. www.kaldewei.com**

Similar **basins**, Villeroy & Boch Omnia, from around £120 each; similar **towel warmer**, Bisque Straight Fronted, from around £740, at Walton Bathrooms. **Tel: 01932 224784. www.waltonbathrooms.co.uk**

Similar porcelain **wall** and **floor tiles**, Cave, from around £36 per sq. m., at Surface Tiles. **Tel: 020 7819 2300. www.surfacetiles.com**